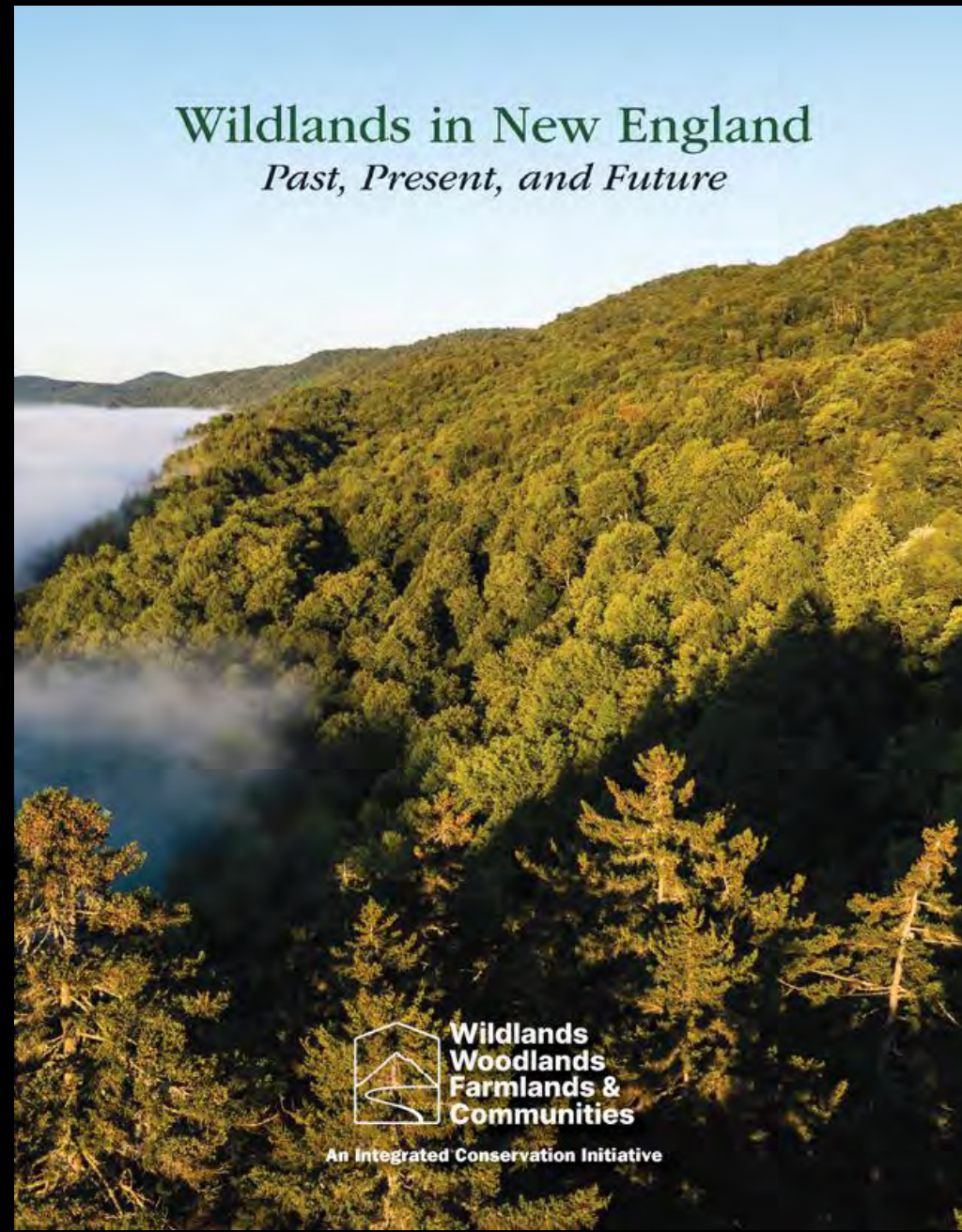


Wildlands & Old Growth Forests

A Call to Action



Leverett



Orwig



Dunwiddie



Cogbill



D'Amato





Pisgah 1920s

Pisgah 1940









Black Pond

Aquinnah, Massachusetts

Martha's Vineyard

Precolonial Indigenous Settlement Areas



2 mi.

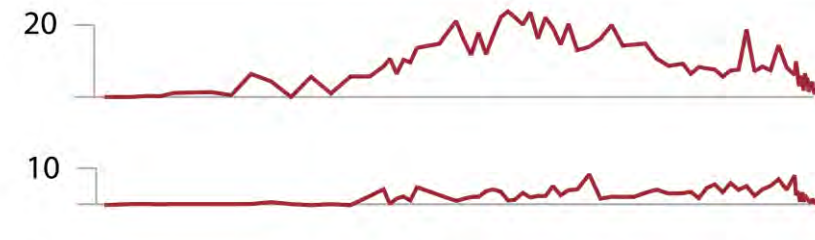
Black Pond

Oak

Pollen %



Beech



Hickory



Pitch Pine



Myrica



Grass



Ragweed

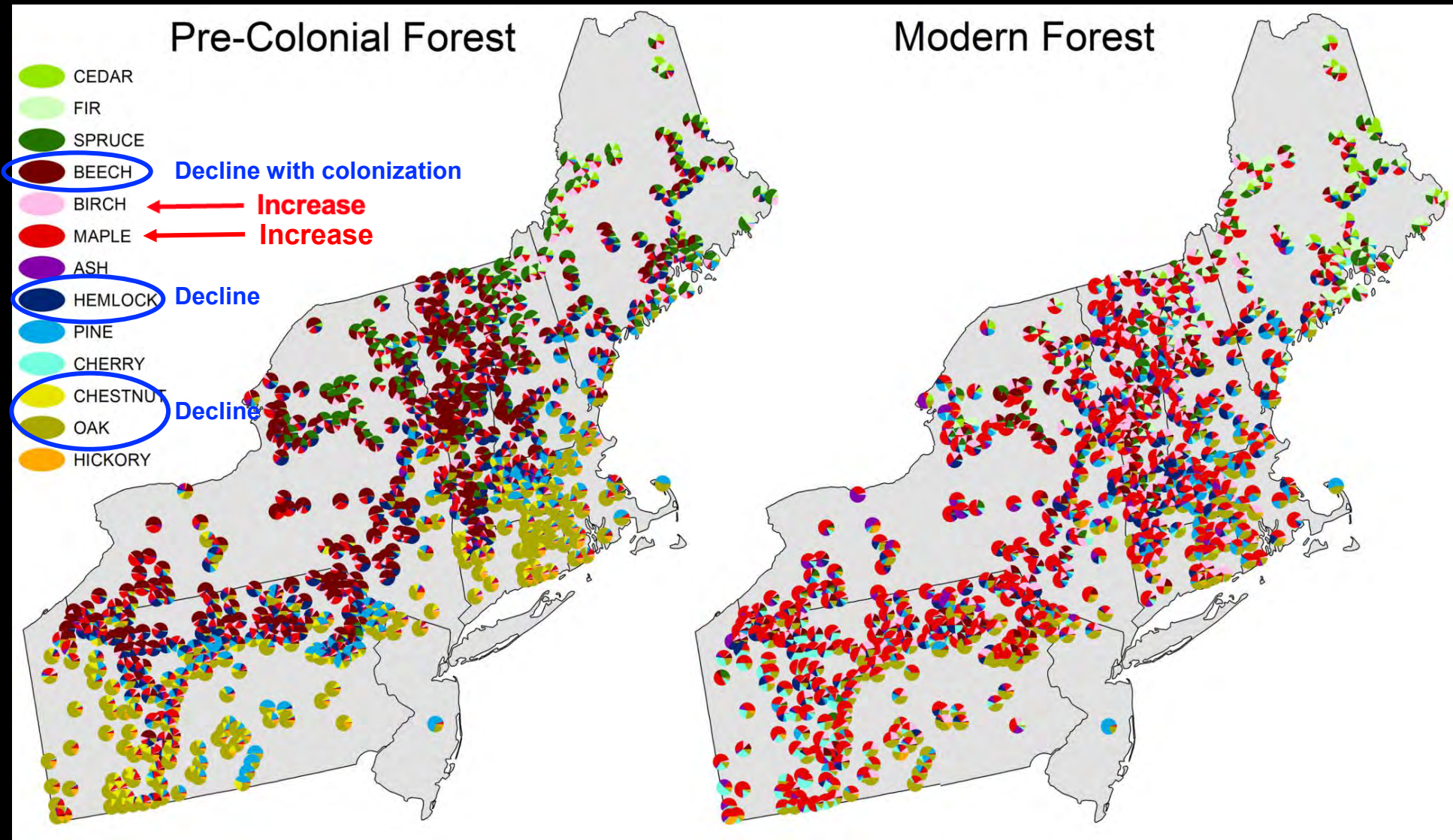


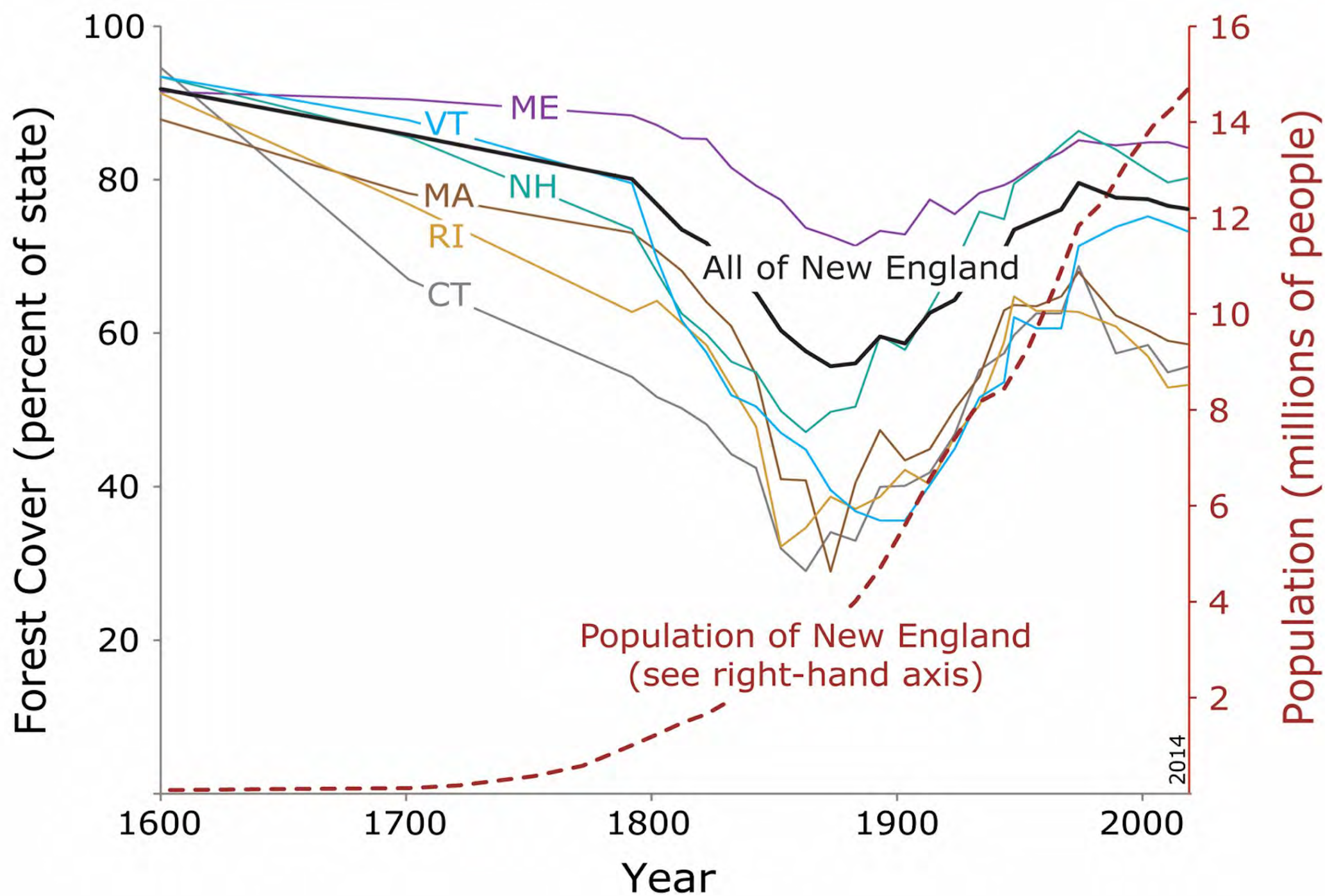
Charcoal
Influx



Years Before Present

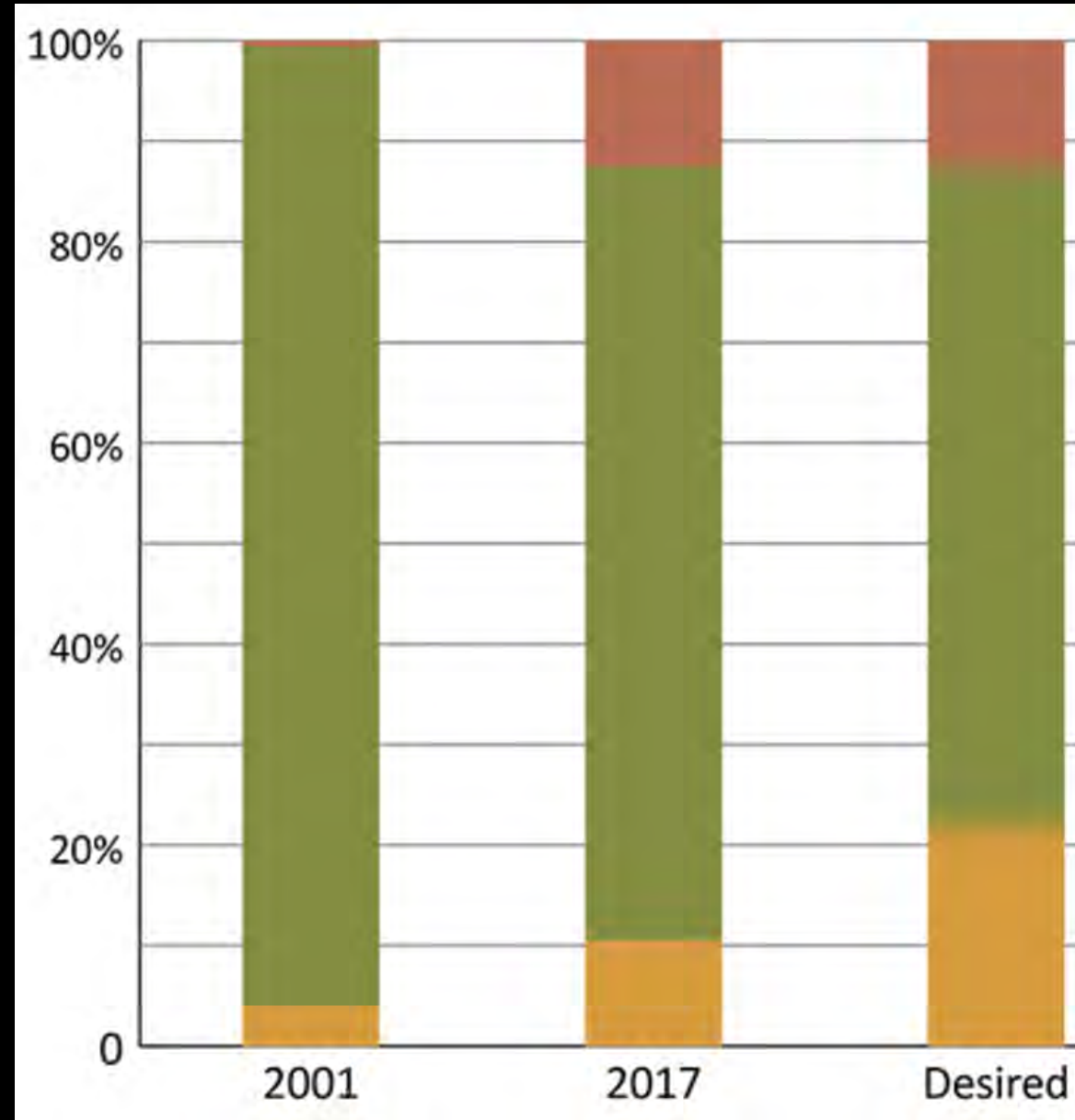
Four Centuries of Forest Transformation





Upland Habitat Goals

MassWildlife Lands



Forests
30-120 Years

Mature Forests
>120 Years

Grassland
Shrubland
Young forest

A History of Rewilding

A Second Chance for New England's Forests

1880's

Today

Swift River -- Petersham, Massachusetts





Why Wildlands?

Intrinsic value

Biodiversity

Carbon storage

Ecological resiliency

Spiritual value

Science Baseline

History...

Why Wildlands?

“Since there is nowhere enough wilderness to permit the full mystery of evolution to flourish, we, as a culture, must begin the daunting task of restoring vast tracts of damaged land to a condition where they can re-wild themselves.

To speak of ecological restoration by humans of ecosystems is to speak in paradoxes. Enter at your own risk. Bring a healthy dose of humility and recognize that you are doing work that only Mother Earth can properly do.

Be not deterred by the apparent absurdity of the task. The alternative is the collapse of the biosphere.”

—Jamie Sayen, “Notes Toward a Restoration Ethic,” 1990

Why now?

Wildlands and Woodlands



*A Vision
for
the Forests
of
Massachusetts*

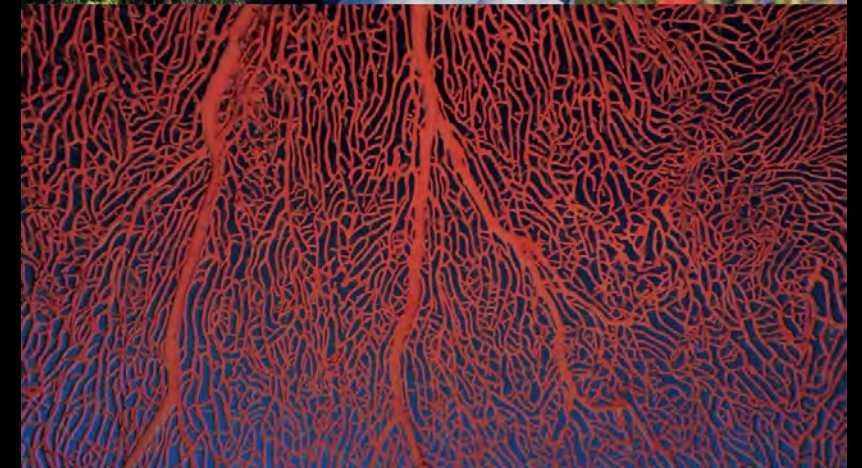


Our First Report (2005)

IPBES-IPCC CO-SPONSORED WORKSHOP

BIODIVERSITY AND CLIMATE CHANGE

Scientific outcome



Three crises

- Climate change
- Biodiversity loss
- Decline in human well-being

Wildlands in New England

Past, Present, and Future



An Integrated Conservation Initiative

Author

David Foster

Emily E. Johnson

Brian R. Hall

Jonathan Leibowitz

Elizabeth H. Thompson

Brian Donahue

Edward K. Faison

Jamie Sayen

David Publicover

Nancy Sferra

Lloyd C. Irland

Jonathan R. Thompson

Robert Perschel

David A. Orwig

William S. Keeton

Malcolm L. Hunter Jr.

Susan A. Masino

Lillian Howell

Primary Affiliation

Harvard Forest, Harvard University

Harvard Forest, Harvard University

Harvard Forest, Harvard University

Northeast Wilderness Trust

Ecologist

Brandeis University

Highstead Foundation

Author -- Children of the Northern Forest

Appalachian Mountain Club

The Nature Conservancy in Maine

The Irland Group

Harvard Forest, Harvard University

New England Forestry Foundation

Harvard Forest, Harvard University

University of Vermont

University of Maine

Trinity College

Northeast Wilderness Trust



What are Wildlands?

Wildlands are tracts permanently protected from development, in which management is explicitly intended to allow natural processes to prevail with “free will” and minimal human interference.

Humans have been part of nature for millennia and can coexist within and with Wildlands without intentionally altering their structure, composition, or function.



Colchester Bog, Vermont



Monhegan Island, Maine



Muddy Pond, Massachusetts



Baxter State Park, Maine

Wildlands Criteria

- **Wildland Intent**
- **Management for an Untrammelled Condition**
- **Permanent Protection**



THESE WILDLANDS ARE
ALL PRIVATELY OWNED,
PLEASE HELP KEEP
THEM PRISTINE.

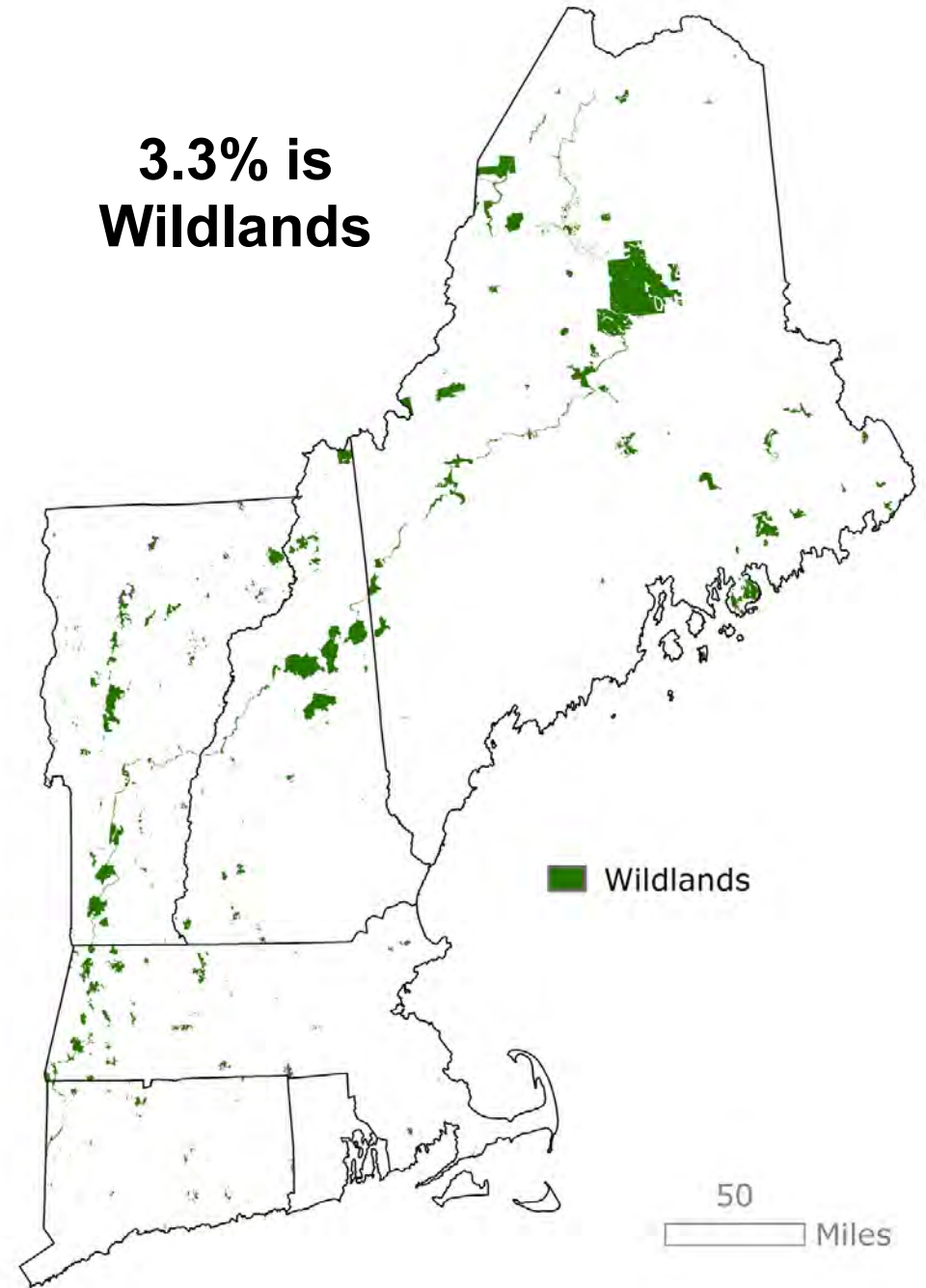
- NO SMOKING OR FIRES
- NO WHEELED VEHICLES
- DO NOT DISTURB PLANTS
- PACK IN / PACK OUT

NO DRONES

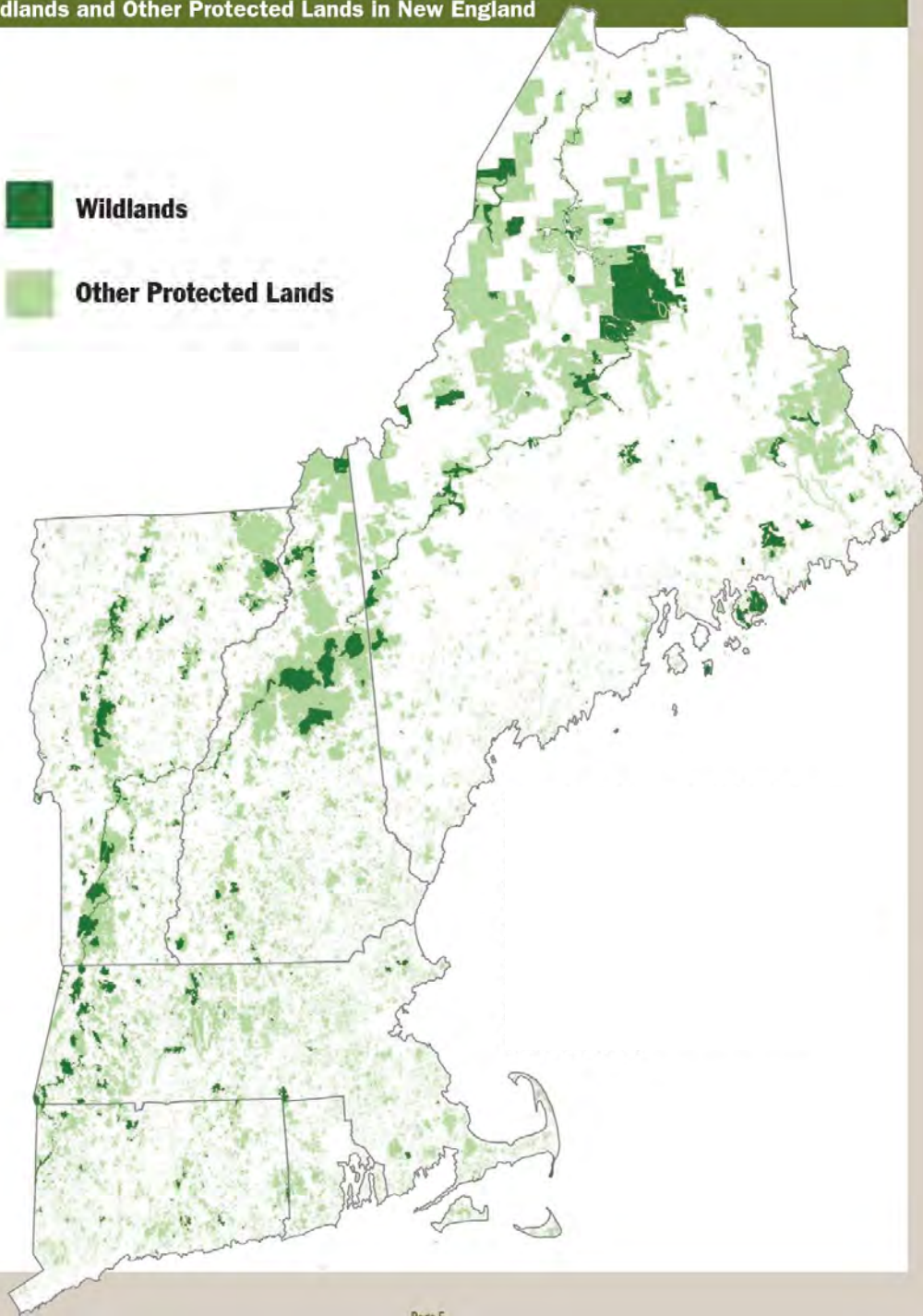
**81% of New
England is
forest**



**3.3% is
Wildlands**

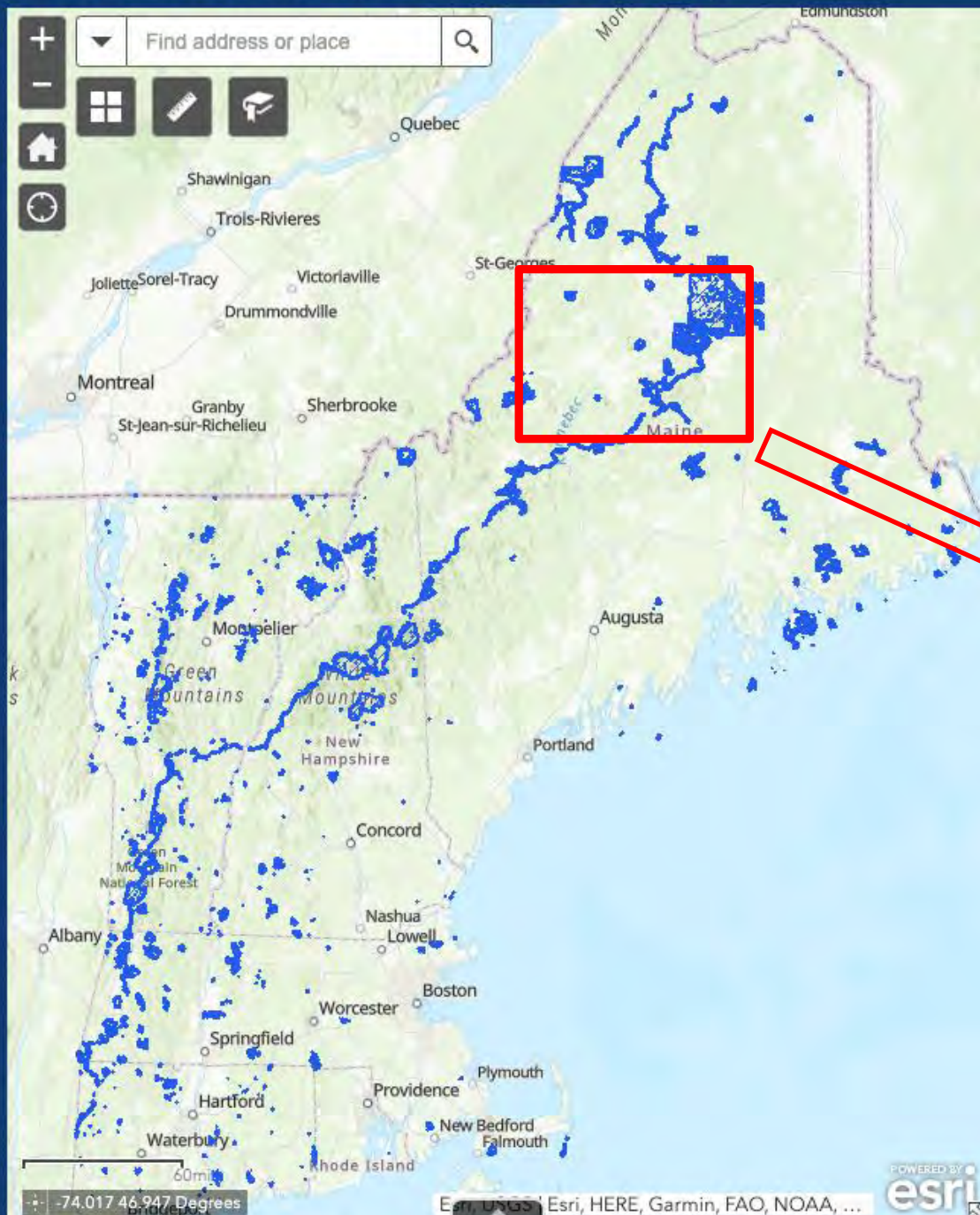


- Wildlands
- Other Protected Lands

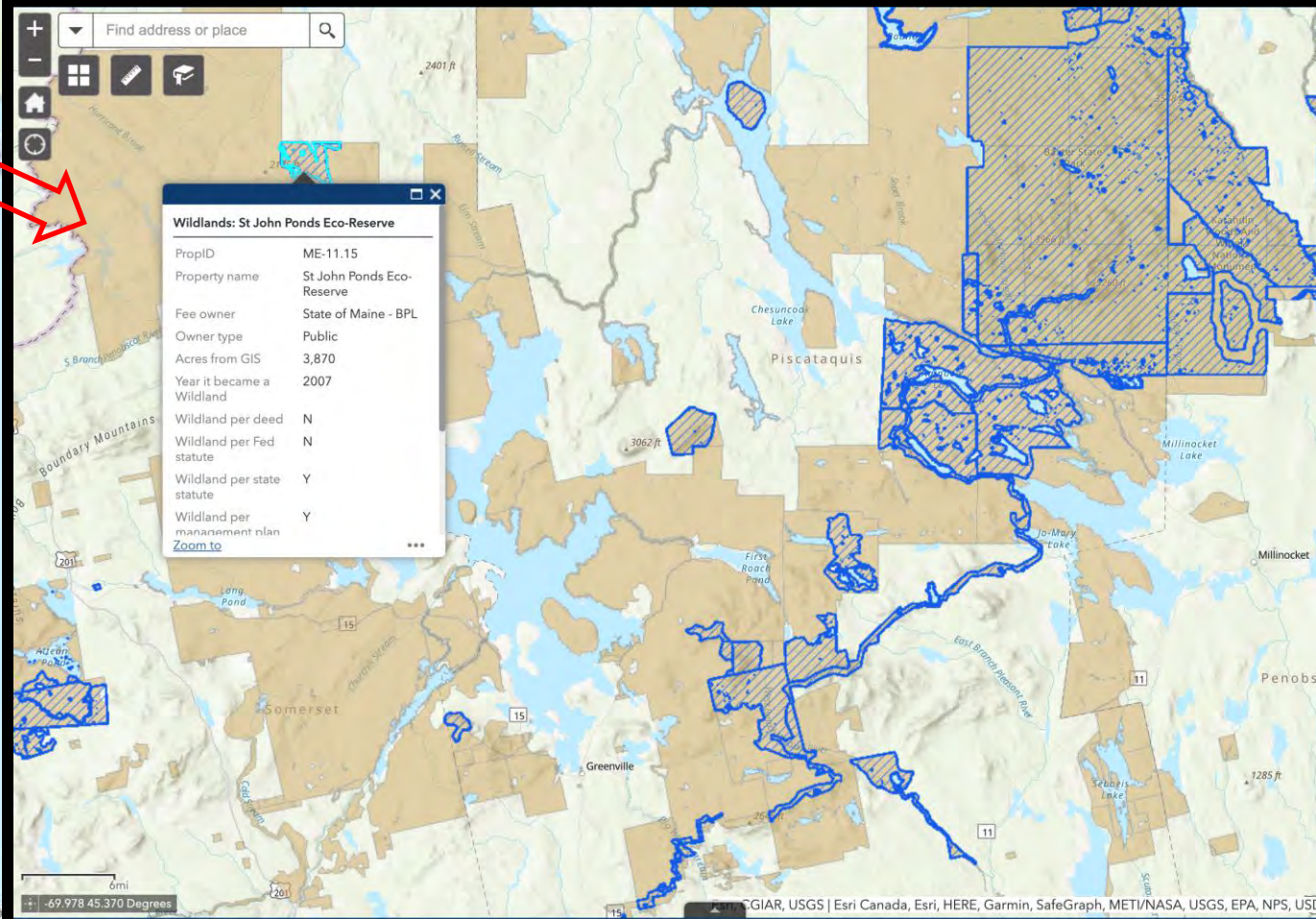


The “Protected” Lands of New England

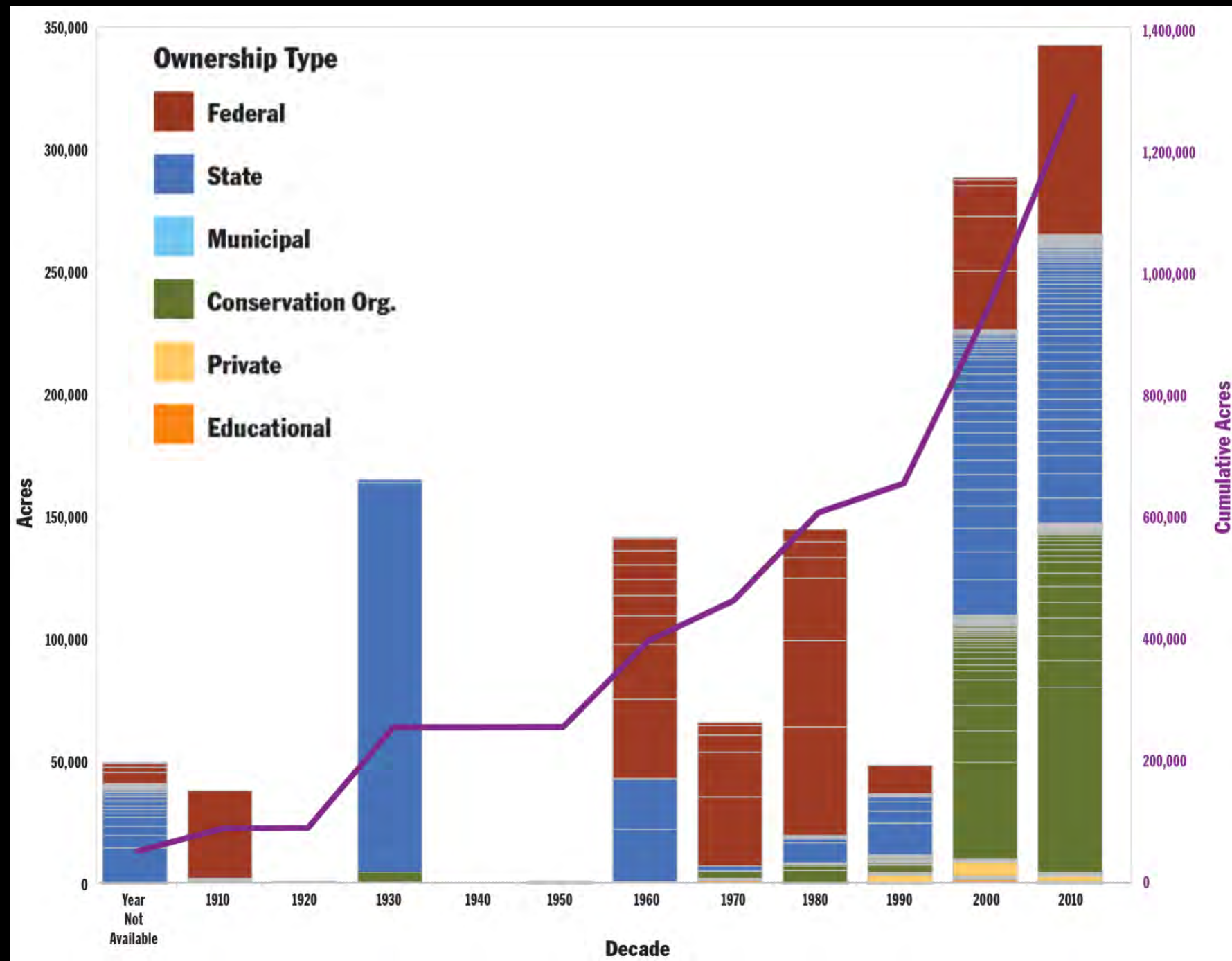
- Wildlands
- Forest, Protected
- Forest, Unprotected



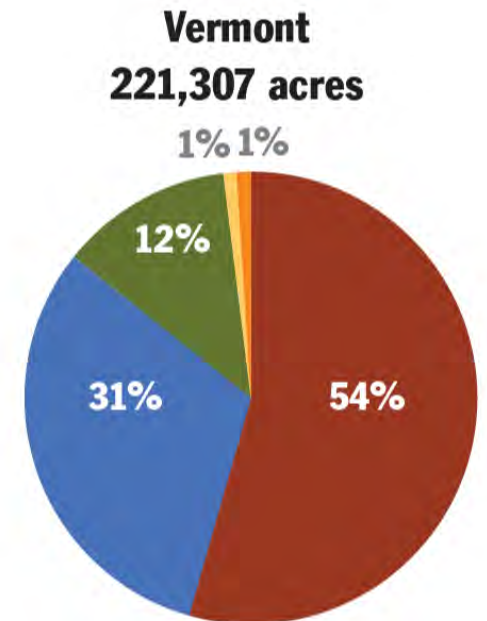
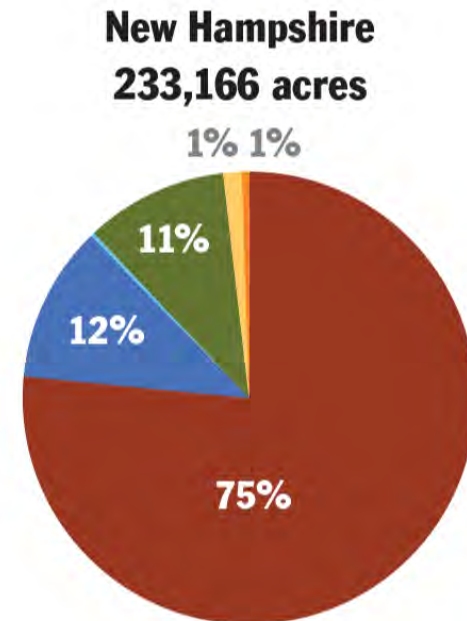
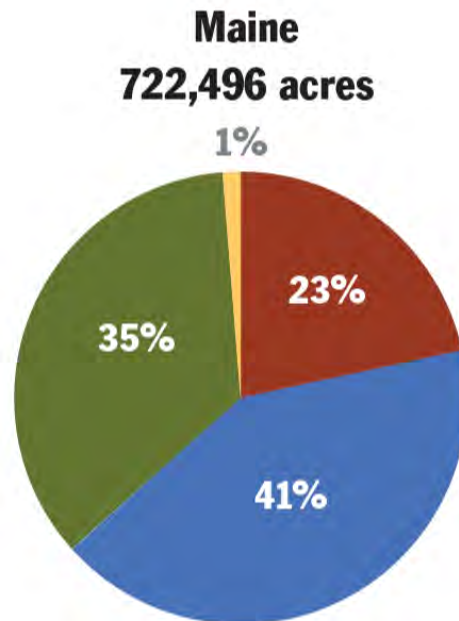
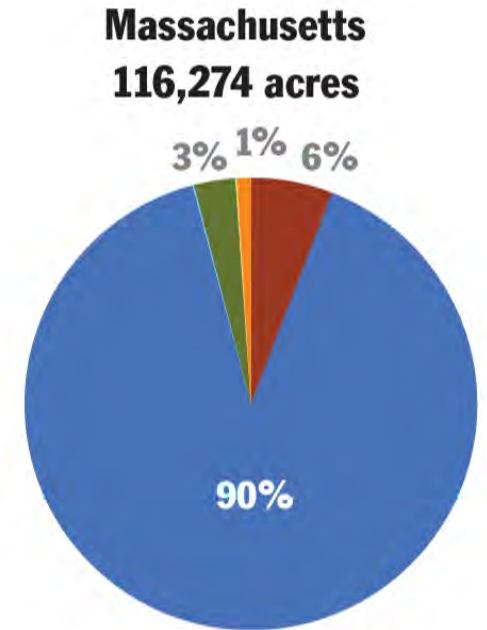
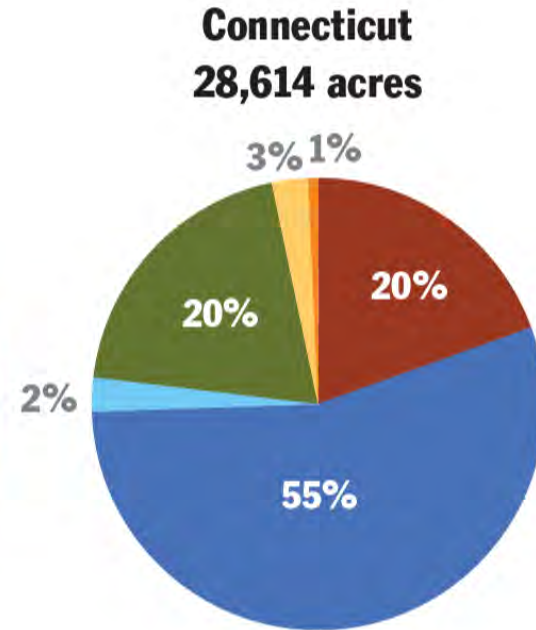
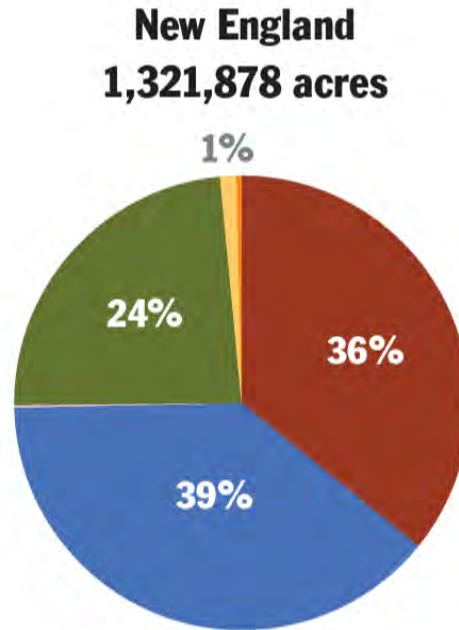
Where are the Wildlands?



Timeline Of Wildlands establishment in New England



Wildland extent and ownership



Wildland Gradients in Management and Security

Management – Constraints

High

Pisgah Forest

Andorra Forest

Connecticut College
Natural Areas

Whetstone Woods

Corner Pond CE

Doren Mountain Wilderness
Lone Mountain Wilderness

Monomoy NWR

Debsconeag Lakes
Wilderness Area

Katahdin
Iron Works

Binney Hill
Preserve

Mount Abraham

DCR Reserves
Pisgah State Park
VT HWAs

Katahdin
Woods & Waters

Pemigewasett
Wilderness
Roach Ponds

DCR - AT

Baxter
Game Sanctuary

CT OFMAs

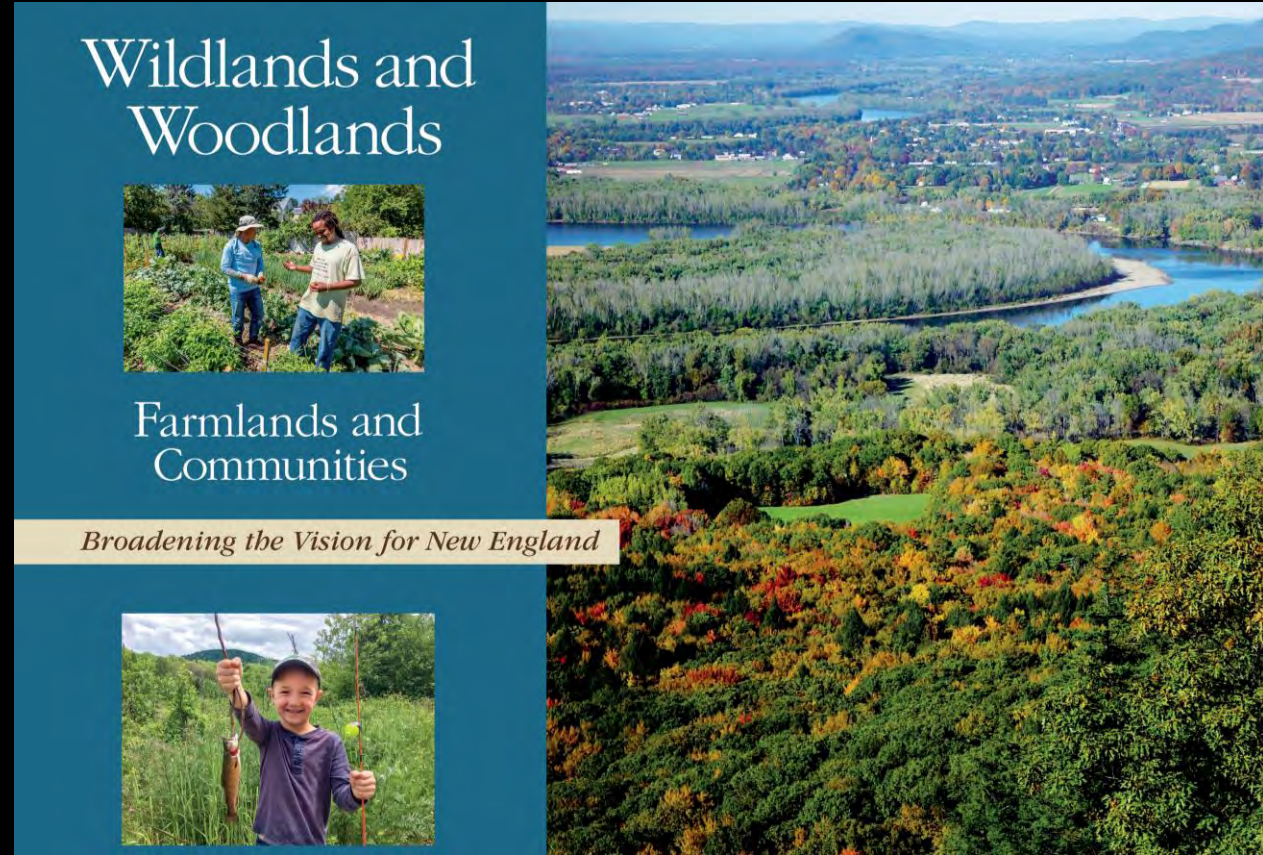
Low

High

Security – Permanence of Protection

Recommendation #1

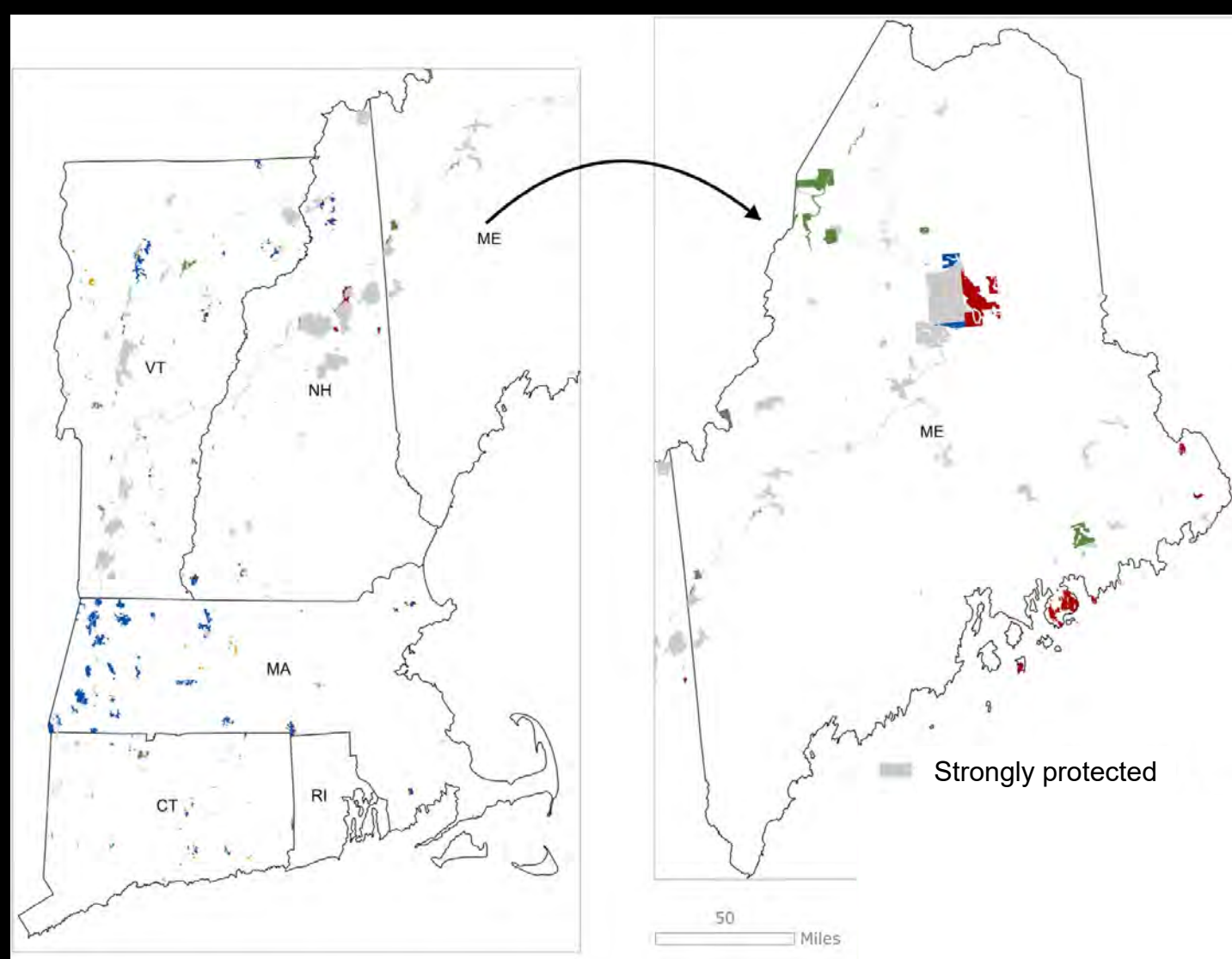
Center Wildlands in an integrated approach to land planning and conservation that includes actively managed forests and farms and sustainably designed communities supported by demand-reduction economy.



Recommendation #2

Strengthen existing Wildlands

- Develop clear intent
- Reinforce Wildlands management
- Increase Wildlands protection in perpetuity
- Enhance the landscape setting for Wildlands



Weakly protected – Owner Type.

- Federal
- State
- Municipal
- Conservation Organization
- Educational

Allagash Wilderness Waterway



Janet McMahon

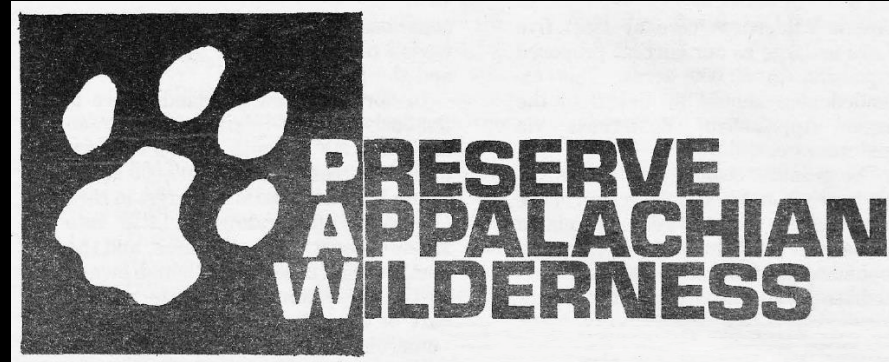
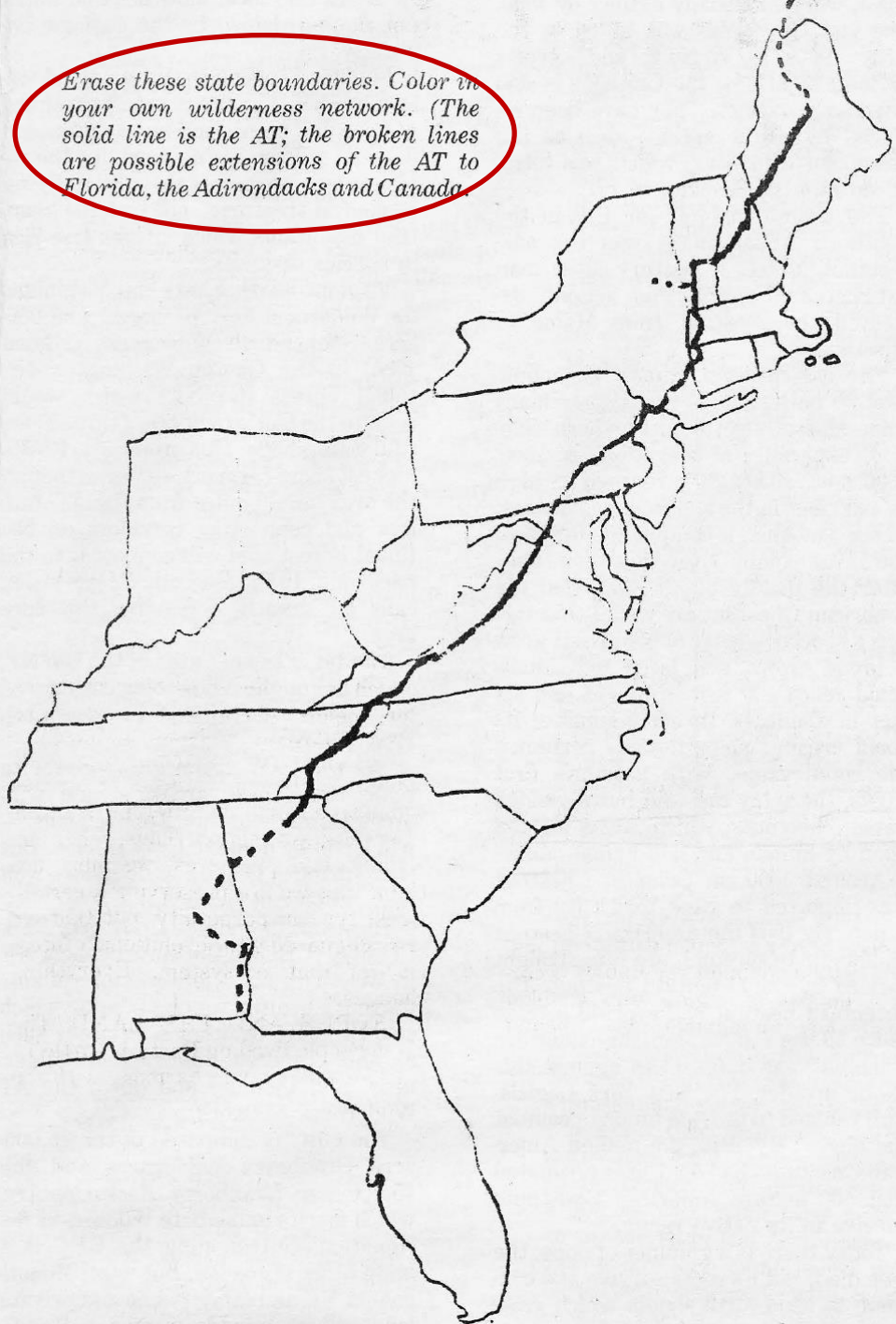
Recommendation #3

Advance Wildland conservation significantly, thoughtfully, and strategically

Each town should have a park, or rather a primitive forest, of five hundred or a thousand acres, where a stick should never be cut for fuel, a common possession forever, for instruction and recreation...

Henry Thoreau 1859

Erase these state boundaries. Color in your own wilderness network. (The solid line is the AT; the broken lines are possible extensions of the AT to Florida, the Adirondacks and Canada)

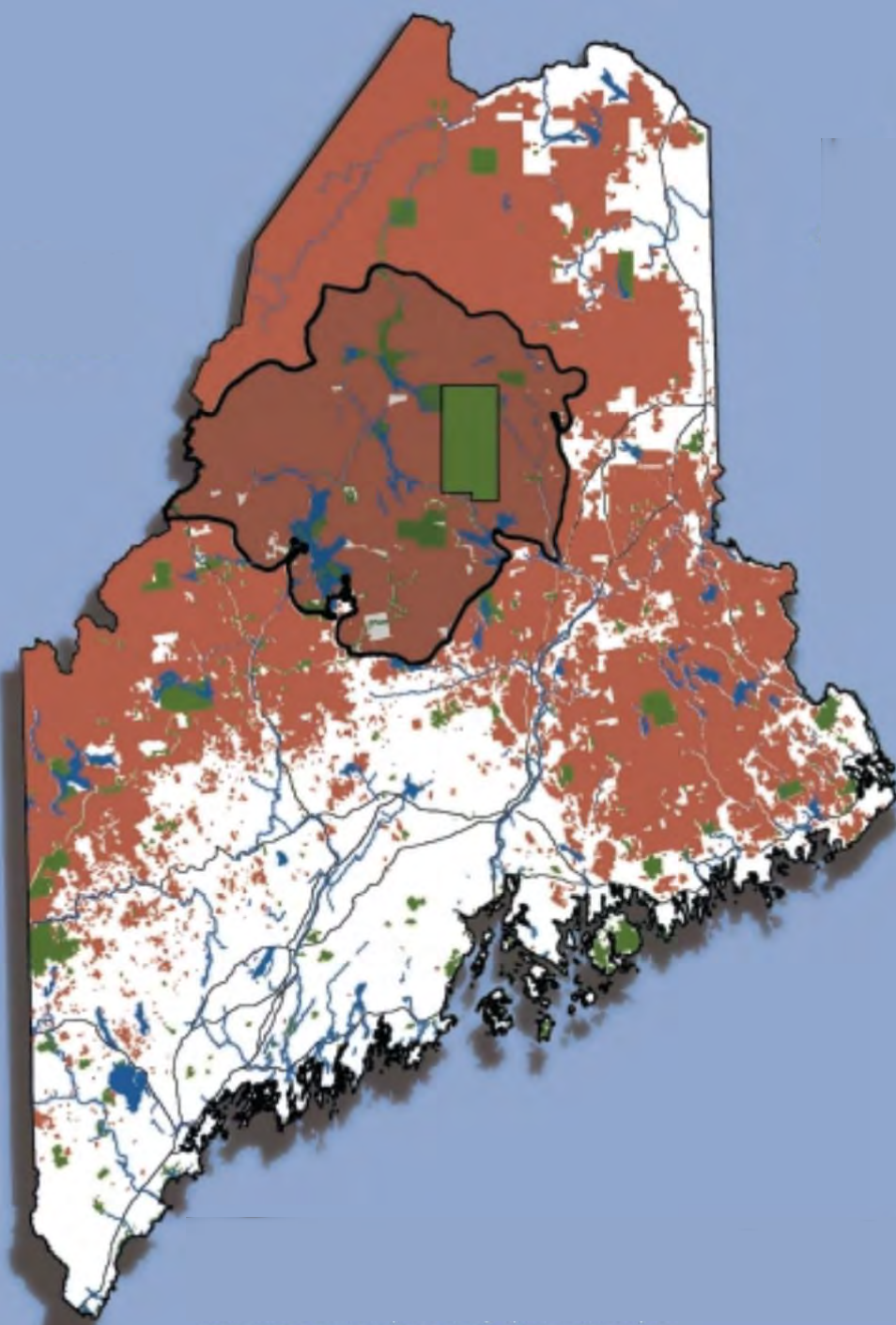


The Appalachian Mountains Vision and Wilderness

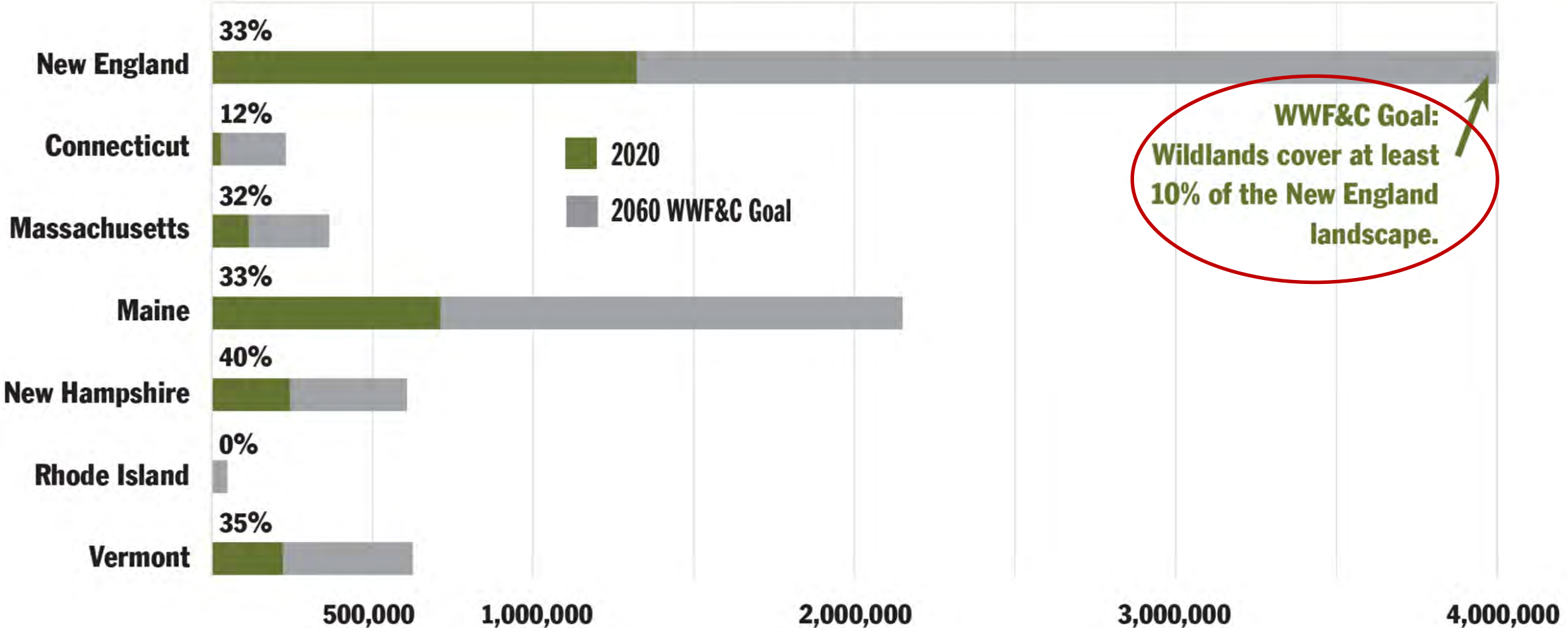
1987

Maine Woods
National Park & Preserve

1995



Current Wildland Extent and WWF&C Goals for 2060

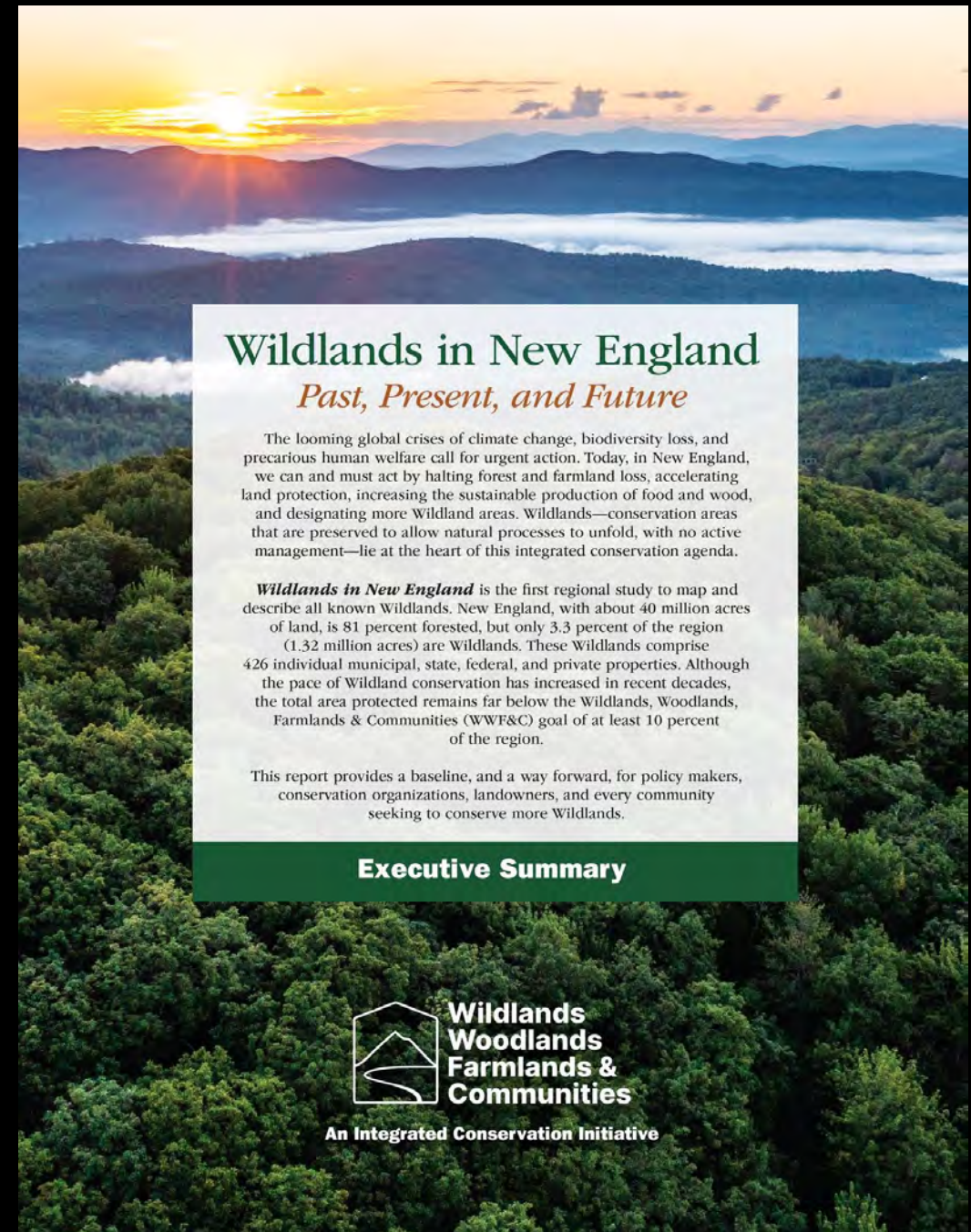


Report Products

- **Full Report** 112 pages
- **Executive Summary** 12 pages
- **State Summaries** one for each state
- **Figures**, graphs, tables and illustrations

WWF&C Ongoing Activities

1. **Advance** research, outreach and **policy**
2. **Expand** the New England Protected Open Space database and Interactive Wildlands Webmap
3. **Evaluate** the goal for Wildlands to 20 percent or more
4. **Integrate** Wildland conservation, local food and resource production, and community development



Northern Forest Forum (1992-2002)
Harvard Forest Archives 2021

From the Ground Up
November 2023

Yale University Press
January 2024

The Northern Forest Forum
Working for Sustainable Natural & Human Communities

Headwaters Restoration 1995

Volume 3 No. 5

Blueprint for a 75-Year Transition to Sustainable Natural & Human Communities
8 Million Acre HEADWATERS Wilderness Reserve System Proposed
For Undeveloped, Uninhabited Lands in Northern Vermont, New Hampshire & Maine
Wildlands Create Context for a New Economic Direction

A SECOND CHANCE FOR THE NORTHERN FOREST

Inside:

- Economic Revitalization
 - Local Ownership & Control
 - Economic Diversification
 - Local Agriculture
 - Labor-Intensive Value-Added
 - Wood Products
 - Low-Impact Forestry
 - Ecological Restoration Jobs
- Cultural Restoration
 - Restoring Sense of Community
 - Ending Regional Brain Drain
 - A Restoration Academy
 - Network of Local Museums
- Political Restoration
 - Local Control Over Decisions
 - Watershed Citizens' Councils
 - Protecting Rights of Future Generations
- Ecological Restoration
 - Restoring Wilderness
 - Protecting Ecological Integrity
 - A Strategy for Reserve Design in More Developed Regions of Maine, NH & VT
- Land Acquisition
 - \$2 Billion Can Buy 7 Million Acres
 - That's Only a \$100 Million a Year for 20 Years

From the Ground Up
Conversations About Conservation,
Climate, and Community in New
England

~ ~ ~

An Online Quarterly
November 2023

